

STR AIR SEEDER

EXCEL
Agriculture



STR AIR SEEDER
Farming for the Future

STANDARD FEATURES AND INCLUSIONS

ALL STR SEEDERS

- Oil cooler with integrated fan air intake to dehumidify the air delivery stream
- Heavy duty structural steel channel chassis
- Super-steer front linkage system on king pin steer STR's for a tighter turning radius
- Gyral's pressurised bins with equalising tubes and 2mm Zinc-anneal construction
- Ladder access, non-slip walk through platforms and safety handrails
- Large, easy to fill, heavy duty hinged bin lids with air tight seal and 25mm square, removable grates
- Sight glasses - each side of bins
- Helical fluted meter rollers for a smooth and uniform product flow
- Hinged access cover to the metering chamber with a clear perspex viewing window
- Over-centre locking hinged bottom hopper doors for easy calibration and clean-out
- Calibration kit complete with electronic scales, discharge chute and catch container
- Mounted camlock quick release primary hose couplings and breakaway hydraulic hose couplers
- Easy access grease bank
- Sandblasted, primed and painted 'Holly Green' with white trimming in a two pack polyurethane topcoat for enhanced corrosion protection

GROUND DRIVE STR SEEDERS

- Gyral's trusted and reliable positive rate, multi-gear mechanical gearboxes for accurate and consistent sowing rates
- Side mounted gear selection and clutch engagement levers with a sowing rate chart conveniently located on underside of adjacent shaft cover lid
- Right angle gearboxes and drive shaft assemblies to minimise chain drives
- Electronic monitoring kit complete with Farmscan 7500 display console (GPS compatible), electric magnetic clutch, fan rpm sensor, air pressure sensor, meter shaft sensors, ground speed sensor and low level bin sensors
- Mechanical hectare meter - positioned for easy viewing when calibrating

HYDRAULIC DRIVE STR SEEDERS

- Easy 'on the go' cabin rate adjustment and variable rate application able including prescription mapping
- Proportional control hydraulic motor kits - each with a manual over-ride thumb screw adjustment
- Compatible with a wide range of proprietary and ISOBUS control systems (eg. Farmscan, Trimble, JD Greenstar, Ag Leader and more)



Integrated fan intake to dehumidify air.
Oil cooler with hinged cover
for easy cleaning

Hinged bottom hopper doors for
calibrating and clean out
(Door open)

Gyral's Super-steer linkage system is
standard on all king pin steer STRs
allowing for a tighter turn radius.



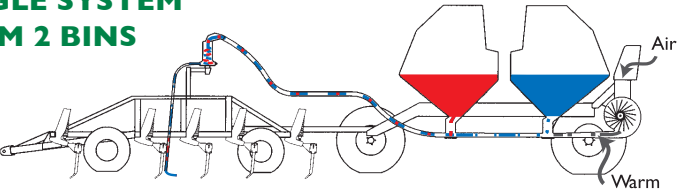
Large, 500mm square lid openings with removable
25mm square grate (smaller grates are available)
Two heavy duty hatches to ensure an airtight seal

QUAD TOW BEHIND - KING PIN STEER																			
		2 BIN									3 BIN								
Chasis		Small Frame			Large Frame			Extra Large Frame			Small Frame			Large Frame			Extra Large Frame		
Model		10-22-STR	13-22-STR	18-22-STR	24-21-STR	30-21-STR	40-21-STR	50-27-STR	60-27-STR	70-27-STR	10-32-STR	13-32-STR	18-32-STR	24-31-STR	30-31-STR	40/30/40-31-STR	50-37-STR	60-37-STR	70-37-STR
Nominal Capacity	Bins	2 x 1000kg	2 x 1300kg	2 x 1800kg	2 x 2400kg	2 x 3000kg	2 x 4000kg	2 x 5000kg	2 x 6000kg	2 x 7000kg	3 x 1000kg	3 x 1300kg	3 x 1800kg	3 x 2400kg	3 x 3000kg	2 x 4000kg 1 x 3000kg	3 x 5000kg	3 x 6000kg	3 x 7000kg
	Total	2660L	3500L	4800L	6400L	8000L	10600L	13300L	16000L	18600L	3990L	5250L	7200L	9600L	12000L	14600L	20000L	24000L	28000L
Tyres	Front	15.5/80x24"	15.5/80x24"	15.5/80x24"	15.5/80x24"	16.9x26"	18.4x26"	24.5x32"	24.5x32"	24.5x32"	15.5/80x24"	15.5/80x24"	15.5/80x24"	16.9x26"	18.4x26"	24.5x32"	24.5x32"	24.5x32"	30.5x32
(Gripster)	Rear	16.9x26"	16.9x26"	16.9x26"	16.9x26"	18.4x26"	24.5x32"	30.5x32"	30.5x32"	30.5x32"	16.9x26"	16.9x26"	16.9x26"	18.4x26"	24.5x32"	30.5x32"	30.5x32"	800/65 R32	900/60 R32
Wheel Centres		2m (3m and 4m optional)						3m (4m optional)			2m (3m and 4m optional)						3m (4m optional)		
Metering		3 or 4 primary outlet - single system hoppers									6 or 8 primary outlet - double tier, split system hoppers								
		(2, 5 & 6 outlet - single system OR 6 & 8 outlet - split system hoppers optional)									Complete with in-line air throttles and blenders with 0-100% infinitely variable adjustment								
Fan		80mm wide (115mm optional)						115mm wide (155mm optional)						155mm wide					
Ground Drive		✓	✓	✓	✓	✓	✓	✗	✗	✗	✓	✓	✓	✓	✓	✓	✗	✗	✗
		Standard with SmartAGSystems monitoring kit including: Farmscan 7500 display console (GPS compatible),									electric magnetic clutch, fan rpm sensor; air pressure sensor; meter shaft sensors, ground speed sensor and low level bin sensors								
Hydraulic Drive		✓	✓	✓	✓	✓	✓	✓	✓	✓	✓	✓	✓	✓	✓	✓	✓	✓	✓
		Standard with a proportional hydraulic motor kit on each bin and a low reduction gearbox on 1 bin.									Compatible with various proprietary and ISOBUS controllers including (but not limited to): Farmscan, Trimble, JD Greenstar, Ag Leader, etc.								
Mixed Bin Sizes		Any combination of 1000, 1300 & 1800kg bins			Any combination of 2400,3000 & 4000kg bins			Any combination of 5000, 6000 & 7000kg bins		Any combination of 1000, 1300 & 1800kg bins			Any combination of 2400, 3000 & 4000kg bins - except for a 4000kg middle bin			Any combination of 5000, 6000 & 7000kg bins			

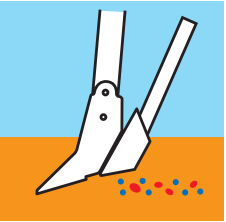
STR AIR SEEDER - EXTRA OPTIONS	
AUGERS	SMALL SEEDS
Hydraulic load & unload auger with hydraulic assisted manoeuvrability 6" diameter / 4.5m long - to suit STR bin sizes 1000, 1300 & 1800kg 8" diameter / 5.5m long - to suit STR bin sizes 2400, 3000 & 4000kg 8" diameter / 6.5m long - to suit STR bin sizes 5000, 6000 & 7000kg	Incorporated or separate systems available - complete with ladder, platform and handrails 200kg (265L) bin 400kg (530L) bin
TOW BRACKETS	BIN SCALES
Fixed tow bracket on implement rear - to suit single axle or king pin steer STR's Floating tow bracket on implement rear - to suit front castor steer STR's Rear tow bracket on air cart - to suit tow behind harrows, liquid trailer, etc.	Mounted electronic load cells - integrated, standalone and remote display options available 8 point load cell kit - to suit 2 bin STR 12 point load cell kit - to suit 3 bin STR
LIGHTING	WHEELS
2 LED work lights and single mounting post - to suit 2 bin STR 4 LED work lights and two mounting posts - to suit 3 bin STR	Larger, or flotation tyre options are available on some STR's (contact your Gyrat representative for more information)
OTHER ACCESSORIES	
Mounted steel tool box Camera monitoring kit - 4 x colour cameras with infrared night vision and 9" LCD colour quad-view screen	

SEEDING METHODS TO
MAXIMISE YOUR YIELDS

SINGLE SYSTEM FROM 2 BINS

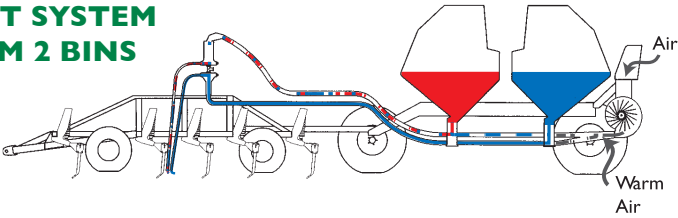


Single system (single shoot) is product from both bins mixing together into one air stream. e.g. To one sowing boot.

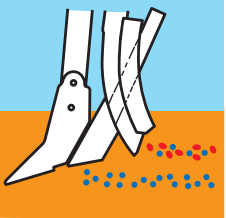


Using a single sowing boot, seed and fertiliser mixing in one air stream sowing depth in one location.

SPLIT SYSTEM FROM 2 BINS

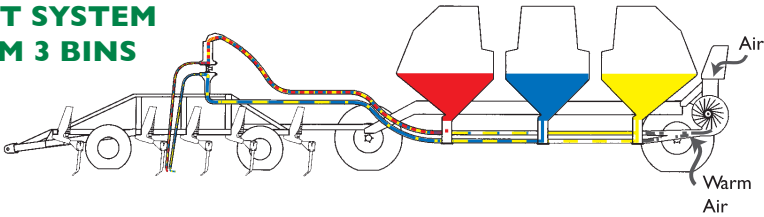


Split system (double shoot) delivers product into two air streams with the ability of blending product rate from one air stream to the other.

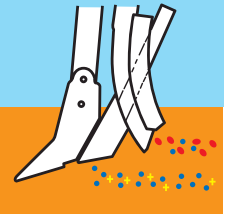


One air stream consists of seed and a small mix of fertiliser, the second a heavier rate of fertiliser.

SPLIT SYSTEM FROM 3 BINS



As per split system with two bins. A third bin introduces another product. e.g. One air stream could consist of seed, with 50% starter and 10% urea, with the second air stream consisting of 50% starter and 90% urea.



One air stream consists of seed and a small mix of fertiliser, the second a larger amount of fertiliser required to be placed separate to the seed.



Hinged access cover with clear perspex viewing window



Gyral's helical fluted metering provides a smooth and uniform flow of products



LED work lights

Bin sight glasses



Perspex window for quick visual inspection

The top hopper section houses the metering assembly with an agitator above

Primary outlets mounted to bottom section of hopper (single system shown)



Hydraulic auger controls
1. Forward, neutral and reverse.
2. Swing arm slew cylinder
3. Auger lift and lower cylinder



Three bin STR



Mounted camlock quick release couplings.



Optional electronic bin scales.

Farming for the Future

Excel Agriculture stands behind its products. We offer service support nationwide, to keep your equipment running efficiently.

The Excel team consists of fully-trained, experienced people who have been around the product range since the onset of the design conception.

We carry a comprehensive range of spare parts with stock in various locations as we understand the importance of ongoing support and peace of mind for your Excel equipment.

OTHER PRODUCTS

- Broadacre Equipment
- Inter Row Cultivator
- Fertiliser Rig
- Side Busters / Centre Busters
- Cultipackers
- Airseeders
- Belt Spreader
- Manure Spreader

Excel Agriculture, a family owned company with traditional family business values.

We believe in the values of service, quality and trust.



EXCEL
Agriculture

www.excelagr.com.au



www.gyral.com.au

P.O. Box 665
74 – 92 Buckland Street
Toowoomba Qld 4350

Ph: (07) 4636 9100
Fax: (07) 4636 9140

Great Western Corporation Pty Ltd ABN 91 064 434 475